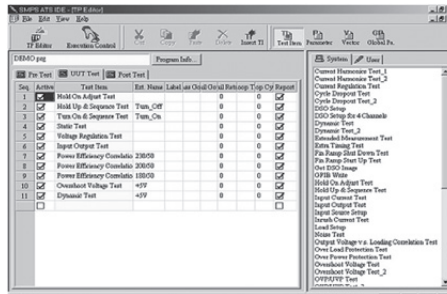
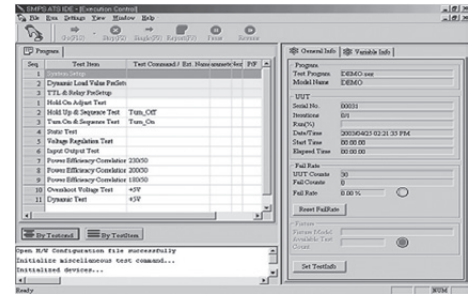




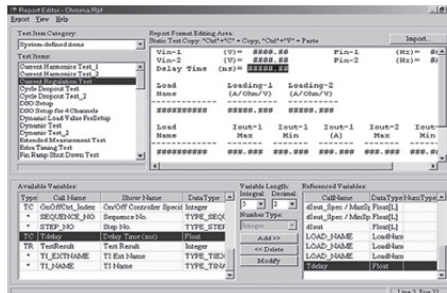
Soft Panel



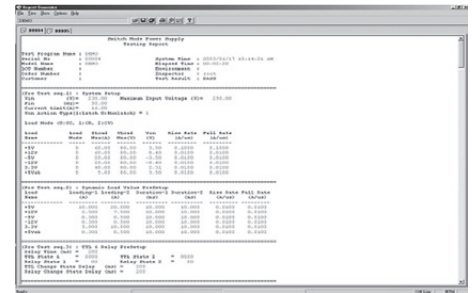
Test Program Editing



Running GO/NOGO



Test Report Editing



Statistical Report

KEY FEATURES

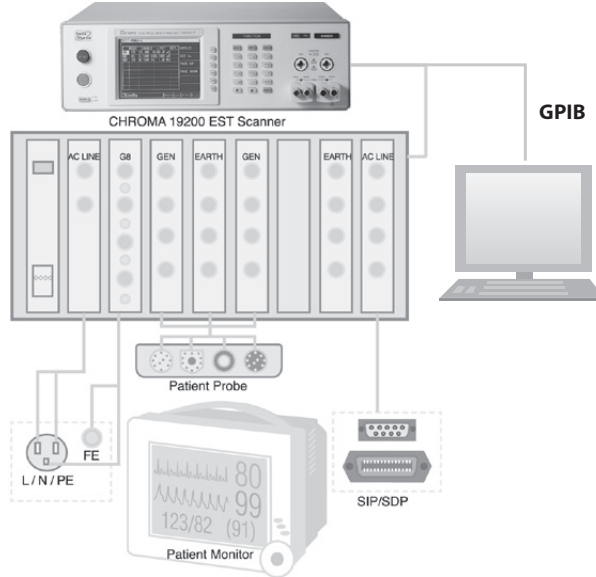
- Support electrical safety test and function test scanning :
 - AC/DC WV Test
 - IR Test
 - GB Test
 - Earth Leakage Current
 - Enclosure Leakage Current
 - Patient Leakage Current
 - Patient Auxiliary Leakage Current
- Support customize function test (option)
- Open architecture software
- Automatically generate and save test report

The safety standard of medical equipment is very strict. Because the medical equipment keeps in touch with the health of the doctor and patient frequently, make several Electrical safety tests can't be ignored especially leakage current test which has already become the most important test in electrical safety test.

The leakage current test of medical equipment includes four kinds - ELC, ECLC, PLC, PALC - to test besides AC/DC/IR/GB test. Additionally, normal / reverse / single fault normal / single fault reverse four powers and earth switch, let medical equipment safety test difficulty and complexity further.

Chroma 19200 can allocate different modules for special medical equipment test reach flexible and time saving. Chroma 19200 with 8900/8910 test system can store test procedure and result via computer for data mining and researching of line manager and Quality control department.

CHROMA 19032-P EST Analyzer



ORDERING INFORMATION

System	Medical Electrical Safety ATS base on 8900	
8910	Medical Electrical Safety ATS base on 8900	
Main Instrument		
Electrical Safety Tester	Refer to Model 19032-P	
Leakage Current Test Module	6000-08 (20A) for 19032-P	
Multi Channel Module	6000-01 (3GC/5HV), 6000-02 (5GC/3HV), 6000-03 (8HV), for 19032-P	
Isolation Transformer	500VA (A190313)/ 1000VA(A190314)	
Electrical Safety Test Scanner	Refer to Model 19200	
Scan Modules for 19200	AC Line Module(A192000)	General Module (A192003)
	AC Line2 Module(A192002)	Earth Module (A192004)
	GB Module(A192005)	GBF-1 Module (A192006)
	GBF-2Module(A192007)	Switch Module (A192008)
AC Source	Refer to Model 6400, 6500, 61500, 61600, 61700 series	

Video & Color
Flat Panel
Display
Lighting
LED/
Devices
Optical
& Automation
Photovoltaic test
Optical Inspection
Automated
Power
Electronics
Battery Test & Automation
Passive
Component
Electrical
Safety
Semicongductor/
IC
Measurement
PXI Test & Measurement
General
Purpose
Manufacturing System
Intelligent
Automation
Turnkey Test & Automation