



KEY FEATURES AND BENEFITS

- Compact footprint, < 80 lbs
- Liquid-free operation
- Semi-automation
- Software integration
- High dissipative power without LN2
- User friendly GUI
- -40 to 150°C operating temperature range
- Cost-efficient
- Direct phase change
- Configurable rack mounting
- Universal socket mounting capability

TARGETED APPLICATIONS

- Automotive IC
- Graphic Processors (GPU)
- Application Processing Units (APU)
- AI and data center
- Aerospace and defense
- Implantable medical devices

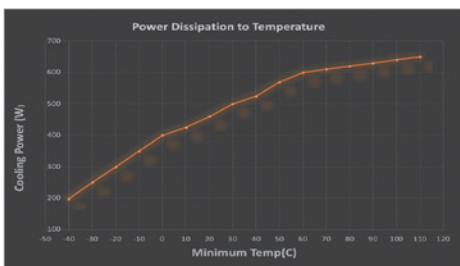
COBRA TEMPERATURE FORCING SYSTEM FOR ATE/SLT TEST APPLICATIONS

Cobra is the most advanced, compact, powerful temperature-forcing system on the market. Cobra is an adaptable solution to the ever-increasing thermal demands of post-silicon validation and device characterization.

With a temperature range of -40°C to 150°C, and combining all the benefits of mobility, quiet operation and liquid-free technology, it is designed primarily for SLT applications with long test times using manual device

placement. The rack system layout optimizes mass parallelism that can be easily setup and customized to specific user-defined specifications.

Cobra is equipped for next-generation product development and IC temperature controlled road map demands.



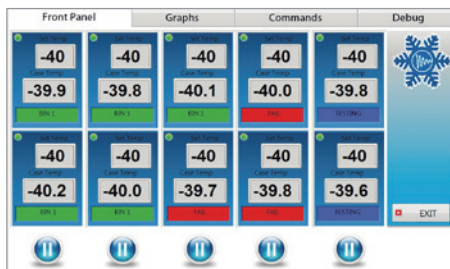
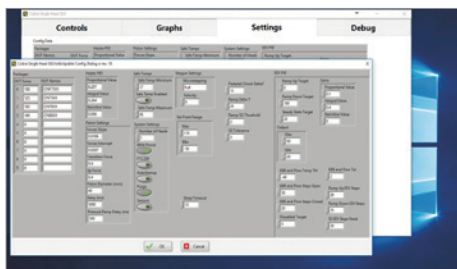
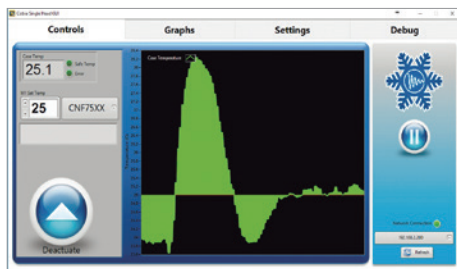
600 W* at 60°C(* Under lab conditions.)



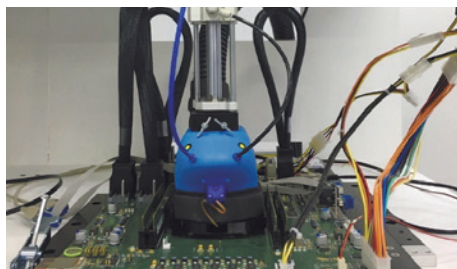
Dual Head Model



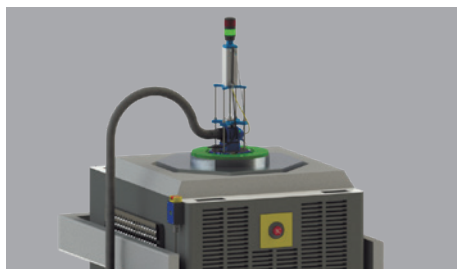
SOFTPANELS



CONFIGURATION



SLT Configuration



ATE Configuration

SPECIFICATIONS

Model	Cobra Single Head Thermal System
System Mechanical Dimensions	579 mm (L) x 360 mm (B) x 394 mm (H)
System Weight	Single head 32 kg; Dual head 41 kg
DUT Dimensions	≥ 3x3 mm to 67x67 mm
Contact Force	≥ 100 kgs (Changing the pneumatic cylinder can increase/decrease the socketing force)
Interface	Standard : TTL & GPIB Option : TCP/IP
Temperature	-40°C~ 150°C Accuracy : 1°C with no load; ± 3°C with load
Temperature Transitions Rates	25°C to -40°C in <3minutes 25°C to 125°C in <2 minute
Communication	TCP/IP, RS232, GPIB
System Requirements	Power: 115 V / 60 / 50 Hz Single Phase, 15 A Max (Stepdown Transformer needed for 220 / 208 V) Ambient temperature : (5°C to 30°C)

All specifications are subject to change without notice.

HEADQUARTERS
CHROMA ATE INC.
66 Huaya 1st Road,
Guishan, Taoyuan
33383, Taiwan
T +886-3-327-9999
F +886-3-327-8898
www.chromaate.com
info@chromaate.com

U.S.A.
CHROMA ATE, INC.
(U.S.A.)
7 Chrysler, Irvine,
CA 92618
T +1-949-421-0355
F +1-949-421-0353
www.chromaus.com
info@chromaus.com

EUROPE
CHROMA ATE
EUROPE B.V.
Morsestraat 32,
6716 AH Ede,
The Netherlands
T +31-318-648282
F +31-318-648288
www.chromaeu.com
sales@chromaeu.com

JAPAN
CHROMA JAPAN
CORP.
888 Nippa-cho,
Kouhoku-ku,
Yokohama-shi,
Kanagawa,
223-0057 Japan
T +81-45-542-1118
F +81-45-542-1080
www.chroma.co.jp
info@chroma.co.jp

KOREA
CHROMA ATE
KOREA BRANCH
3F Richtogether
Center, 14,
Pangyoeyeok-ro 192,
Bundang-gu,
Seongnam-si,
Gyeonggi-do
13524, Korea
T +82-31-781-1025
F +82-31-8017-6614
www.chromaate.co.kr
info@chromaate.com

CHINA
CHROMA ELECTRONICS
(SHANGHAI) CO., LTD.
3F Building 40, No. 333,
Qin Jiang Rd.,
Shanghai, China
T +86-21-6495-9900
F +86-21-6495-3964

SOUTHEAST ASIA
QUANTEL PTE LTD.
(A Company of Chroma Group)
46 Lorong 17 Geylang # 05-02
Enterprise Industrial Building,
Singapore 388568
T +65-6745-3200
F +65-6745-9764
www.quantel-global.com
sales@quantel-global.com

HSINCHU BRANCH
6F, No. 5, Technology
Rd., Science Park,
Hsinchu City
30078, Taiwan
T +886-3-563-5788
F +886-3-563-5758

SANTA CLARA
3350 Scott Blvd.,
#601 Santa Clara,
CA 95054
T +1-408-969-9998
F +1-408-969-0375

CHROMA ATE GERMANY
Südtiroler Str. 9, 86165,
Augsburg, Germany
T +49-821-790967-0
F +49-821-790967-600
www.chromaeu.com
sales@chromaeu.com