



## MODEL 3160-C

### KEY FEATURES

- Advance thermal technology (Nitro TEC)
- Faster index time 0.6 sec
- Active thermal control and full range temperature
- Chamber less design
- Support multiple sites
  - Single site (option)
  - Dual sites : 1 x 2 (80 mm)
  - Quad sites : 1 x 4 (40 mm) ; 2 x 2 (80 x 60 mm)
  - Octal sites : 2 x 4 (40 x 60 mm) (option)
- Simple, quick kit changeover

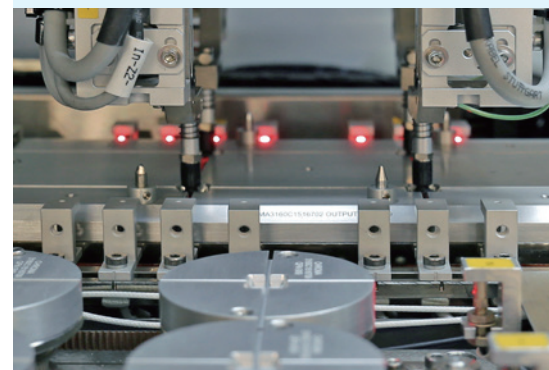
## TRI-TEMP OCTAL SITES HANDLER MODEL 3160-C

### Nitro TEC Thermal Technology

CHROMA releases new thermal solution "Nitro-TEC thermal technology" which is a combination of Nitrogen and TEC control system. Comparing to traditional LN2 cooling system, Nitro-TEC thermal technology brings the following advantages to user.

- ATC control system with better temperature accuracy during testing
- Allows customer switch Hot and Cold temperature test quickly
- Soaking room with liquid nitrogen to pre-cool device efficiently
- Shorten the down time, when maintaining handler or exchanging kits
- Less LN2 consumption

Chroma 3160-C Handler is productive pick & place system for high volume multi-site IC testing. It is capable of handling various package types of device and supports Single, Dual or Quad test sites. The reliable handling mechanism and functionality outfit leads to high throughput and low jam rate. Chroma 3160-C can increase production productivity and efficiency and shorten the time of exchanging kits. The system come with Active Thermal Control (ATC) System to test the DUT -55°C to 150°C.

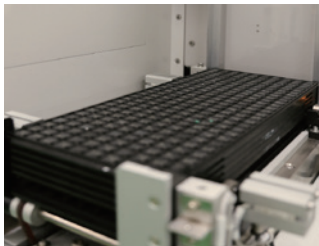


**Chroma**

## SPECIFICATIONS

<b>Model</b>	<b>3160-C</b>
Dimension (W x D x H)	2,300 mm x 1,850 mm x 2,100 mm
Weight	Approx. 1,650 kg
Facility	Power : AC220, 50/60 Hz single-phase, 10 KVA max. Dry air : -70°C dew point, 0.5 Mpa, 1,200 L/min. LN2 source : 0.35Mpa (50 Psi), consumption 0.6 kg/min.
Applicable Device	Type : BGA, QFP, CSP, QFN, Flip chip, TSOP, etc. Package size : 3 mm x 3 mm to 50 mm x 50 mm (Ball pitch > 0.35mm)
Contact Mode	Direct contact / drop and press
Interface	Standard : TTL & GPIB Option : TCP/IP
Multiple Site	Single site (option) Dual sites : 1 x 2 (80 mm) Quad sites : 1 x 4 (40 mm) ; 2 x 2 (80 x 60 mm) Octal sites : 2 x 4 (40 x 60 mm)
Contact Area	Test Head Area : 600 mm (from socket center) Socket mounting height : 1,100 mm (1,200 mm option)
Index Time	0.6 sec. (excluding tester communication time), max. up to 3,200 at zero test time
Rotation Function (option)	$\pm 90^\circ$ , $\pm 180^\circ$
Jam Rate	1/5,000 for ambient / hot / cold temperature mode
Category	7 categories (3 auto, 4 manual)
Contact Force	120 kgf
Thermal Range	Temperature range : -40°C to 125°C before contact (option : -55°C to 150°C before contact) Test head : set-point $\pm 3^\circ\text{C}$ before contact Pre-soak buffer and input shuttle : set-point $\pm 5^\circ\text{C}$ before contact
Coolant	Non-conductive, 3M Novec thermal fluid
Changeover Time of Change Kit	15 mins

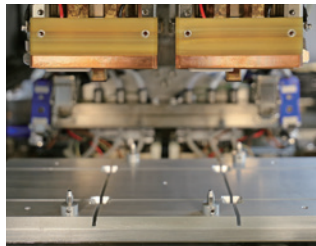
All specifications are subject to change without notice.



Auto tray load / unload



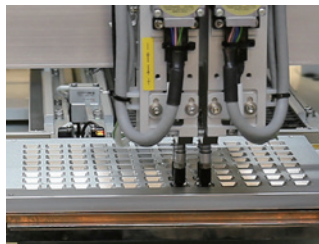
Pre-soak



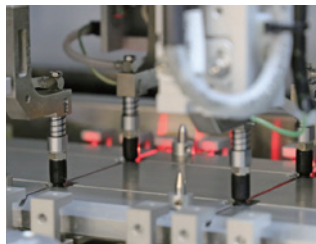
Test head



Rotator



Defrost



Programmable probe

## ORDERING INFORMATION

**3160-C** : Tri-Temp octal Sites Test Handler

Get more product & global distributor information in Chroma ATE APP



iOS



Android

Search Keyword

3160-C

HEADQUARTERS  
CHROMA ATE INC.  
66 Huaya 1st Road,  
Guishan, Taoyuan  
33383, Taiwan  
T +886-3-327-9999  
F +886-3-327-8898  
www.chromaate.com  
info@chromaate.com

U.S.A.  
CHROMA ATE, INC.  
(U.S.A.)  
7 Chrysler, Irvine,  
CA 92618  
T +1-949-421-0355  
F +1-949-421-0353  
www.chroma.us.com  
info@chroma.us.com

EUROPE  
CHROMA ATE  
EUROPE B.V.  
Morsestraat 32,  
6716 AH Ede,  
The Netherlands  
T +31-318-648282  
F +31-318-648288  
www.chroma.eu.com  
sales@chromaeu.com

CHROMA ATE GERMANY  
Südtiroler Str. 9, 86165,  
Augsburg, Germany  
T +49-821-790967-0  
F +49-821-790967-600  
www.chroma.eu.com  
sales@chromaeu.com

JAPAN  
CHROMA JAPAN  
CORP.  
888 Nippa-cho,  
Kouhoku-ku,  
Yokohama-shi,  
Kanagawa,  
223-0057 Japan  
T +81-45-542-1118  
F +81-45-542-1080  
www.chroma.co.jp  
info@chroma.co.jp

KOREA  
CHROMA ATE  
KOREA BRANCH  
3F Richtogether  
Center, 14,  
Pangyoyeok-ro 192,  
Bundang-gu,  
Seongnam-si,  
Gyeonggi-do  
13524, Korea  
T +82-31-781-1025  
F +82-31-8017-6614  
www.chromaate.co.kr  
info@chromaate.com

CHINA  
CHROMA ELECTRONICS  
(SHANGHAI) CO., LTD.  
3F Building 40, No. 333,  
Qin Jiang Rd.,  
Shanghai, China  
T +86-21-6495-9900  
F +86-21-6495-3964

SOUTHEAST ASIA  
QUANTEL PTE LTD.  
(A Company of Chroma Group)  
46 Lorong 17 Geylang # 05-02  
Enterprise Industrial Building,  
Singapore 388568  
T +65-6745-3200  
F +65-6745-9764  
www.quantel-global.com  
sales@quantel-global.com

HSINCHU BRANCH  
6F, No. 5, Technology  
Rd., Science Park,  
Hsinchu City  
30078, Taiwan  
T +886-3-563-5788  
F +886-3-563-5758

SANTA CLARA  
3350 Scott Blvd.,  
#601 Santa Clara,  
CA 95054  
T +1-408-969-9998  
F +1-408-969-0375