



## MODEL 3240-Q

### KEY FEATURES

- Cost-effective Integrated RF Solution
- Customized RF Isolation Chamber with Integrated Tester Docking
- Up to 120 mm Test Site Pitch
- Up to x8 Parallel Test Site
- 3x3 mm ~ 45x45 mm Package
- Precise Positioning
- Compatible with JEDEC and EIAJ tray

## RF SOLUTION INTEGRATED HANDLER

### MODEL 3240-Q

The Chroma 3240-Q is a unique and innovative handler with integration of RF/Wireless isolation chamber. The system is configured for up to octal-site with individual isolation for true parallel test. With a streamlined automation sequence, precise Pick & Place system, flexible test site configuration, high throughput and low jam rate, the 3240-Q is ideal for RF/Wireless production test.

The Chroma 3240-Q is also capable of handling various package sizes and types, accurately binning according to customer specified test results. With automatic Input/Output tray stacks, the 3240-Q can accommodate both JEDEC and EIAJ tray standards. Optional temperature control extends the test capability to provide high temperature testing up to 150°C.



**Chroma**

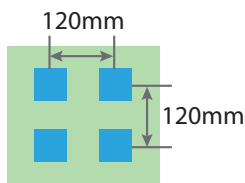
## SPECIFICATIONS

<b>Model</b>	<b>3240-Q</b>
Dimension (WxDxH)	1360 mm x 1390 mm x 1930 mm
Weight	900kg
Facility	Power : AC200V, Single phase 50/60Hz, 10 KVA Max. Compressed Air : 0.5 MPa or higher (dry and clean air) Flow Rate : 150 L/min, constant supply
Applicable Device	Type : CSP, BGA, Gull Wing Package Package Size : 3 mm x 3 mm to 40 mm x 40 mm Package Height : 0.5 mm to 5 mm Lead / Ball pitch : 0.5 mm / 0.4 mm and above
Category	3 categories (1 auto, 2 manual)
Applicable Tray	JEDEC or EIAJ
Index Time	4 sec.
Contact Method	Direct Contact / Drop and Press
Contact Force	Up to 50 ± 1 kgf
Test Site Configuration	4 sites, 2x2, Pitch X = 120 mm, Y = 120mm 8 sites, 4x2, Pitch X = 100 mm, Y = 120mm
PCB Same Site Isolation	-63dB
PCB Different Site Isolation	-91.5dB
Chamber Far Field Isolation	2.4GHz : -80dB @ Distance >250mm (=2*λ2.4GHz)
Jam Rate	1/5,000
Interface	GPIB
Hot Temperature (Option)	Operating Range : Ambient ~ 125°C (Heating Time < within 30 min.) Accuracy : Contact Head ± 3°C, Pre-heater ± 5°C

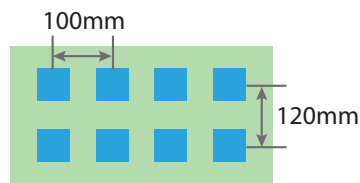
All specifications are subject to change without notice.

## TEST SITE CONFIGURATION

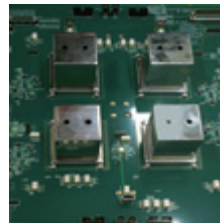
### Quad-site



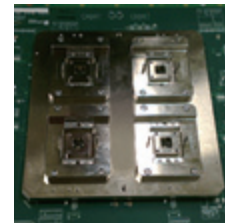
### Octal-site



## RF CHAMBER ILLUSTRATIONS



Bottom Cover



Top Cover



Loading



Pre-alignment

## ORDERING INFORMATION

**3240-Q** : RF Solution Integrated Handler

**HEADQUARTERS**  
**CHROMA ATE INC.**  
66 Huaya 1st Road, Guishan,  
Taoyuan 33383, Taiwan  
T +886-3-327-9999  
F +886-3-327-8898  
www.chromaate.com  
info@chromaate.com

**HSINCHU BRANCH**  
6F, No. 5, Technology Rd., Science Park,  
Hsinchu City 30078, Taiwan  
T +886-3-563-5788  
F +886-3-563-5758

**U.S.A.**  
**CHROMA ATE INC.(U.S.A.)**  
7 Chrysler, Irvine,  
CA 92618  
T +1-949-421-0355  
F +1-949-421-0353  
www.chromaau.com  
info@chromaau.com

**SANTA CLARA**  
3350 Scott Blvd., #601  
Santa Clara, CA 95054  
T +1-408-969-9998  
F +1-408-969-0375

**EUROPE**  
**CHROMA ATE EUROPE B.V.**  
Morsestraat 32,  
6716 AH Ede,  
The Netherlands  
T +31-318-648282  
F +31-318-648288  
www.chroma.eu.com  
sales@chroma.eu.com

**JAPAN**  
**CHROMA JAPAN CORP.**  
472 Nippa-cho, Kouhoku-ku,  
Yokohama-shi, Kanagawa,  
223-0057 Japan  
T +81-45-542-1118  
F +81-45-542-1080  
www.chroma.co.jp  
info@chroma.co.jp

**CHINA**  
**CHROMA ATE (SUZHOU)**  
**CO., LTD.**  
Building 7, ShiShan Industrial  
Gallery, No. 855, Zhu Jiang Rd.,  
Suzhou New District, Jiang Su,  
China  
T +86-512-6824-5425  
F +86-512-6824-0732

**CHROMA ELECTRONICS**  
**(SHANGHAI) CO., LTD.**  
3F Building 40, No. 333,  
Qin Jiang Rd., Shanghai,  
China  
T +86-21-6495-9900  
F +86-21-6495-3964