



Chroma 58154 series ESD (Electrostatic Discharge) Test Systems are PCI controlled module to simulate electrostatic discharge pulse during electronic device testing. The 58154 series offer both ANSI/ESDA/JEDEC JS-001-2014-Human Body Model and ANSI/ESD STM 5.2-2012-Machine Model. The user friendly software offers programmable and flexible features, such as sampling test on a wafer, ESD model, ESD pulse polarity, ESD pulse interval in a sequence, and automatic testing function.

The 58154 series includes a control module and a pulse output external box. High voltage power supply unit (PSU) and pulse shaping circuits provide the ESD standards compliant pulse waveform.

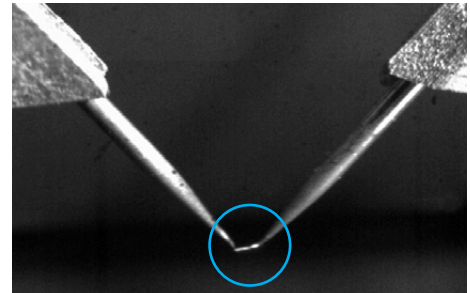
The 58154 series offer a flexible and total ESD test solution to customers. Furthermore, the ESD pulse is generally applied to the device under test before measuring device electric parameters and the 58154 series can be perfectly integrated with Chroma 58212-C to provide a total solution in production line.

ORDERING INFORMATION

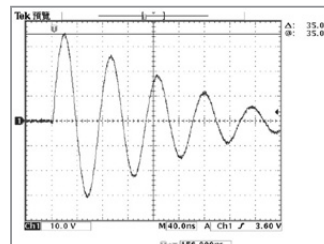
- 58154** : ESD Test System (4kV/400V)
- 58154-B** : ESD Test System (6kV/800V)
- 58154-C** : ESD Test System (8kV/800V)

KEY FEATURES

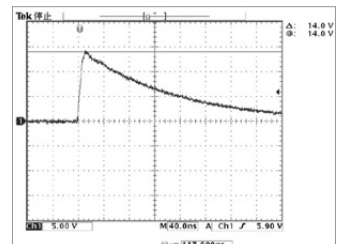
- Two models ESD pulse generation : human body model and machine model
- Programmable auto test : pulse delay, cycle and polarity are programmable
- Resolution (58154) : 5V per-step for machine model, 20V per-step for human body model
- Resolution (58154-B) : 10V per-step for machine model, 30V per-step for human body model
- Resolution (58154-C) : 10V per-step for machine model, 30V per-step for human body model
- Diversity control interface : PCI DIO card
- Up to 8000V (58154-C)



ESD Test on LED chip



Machine Model waveform



Human Body Model waveform

SPECIFICATIONS			
Model	58154	58154-B	58154-C
Parameter	Value		
ESD Mode	Machine Model / Human body model		
Pulse Voltage	Machine model: 50V to 400V ± 5V Human body model: 250V to 4KV ± 20V	Machine model: 100V to 800V ± 10V Human body model: 250V to 6KV ± 30V	Machine model: 100V to 800V ± 10V Human body model: 250V to 8KV ± 30V
ESD Specification *1 *2	Machine model reference on STM5.2-2012 ; Human body model reference on ANSI/ESDA/JEDEC JS-001-2014		
Pulse Interval	20 ms *3 to 1 s (User definable)		
Pulse Repetition	Single or multiple		
Pulse Polarity	Positive or negative (software control)		
AC Input	100 to 240V, 47 to 63 Hz		
Dimensions	434.6mm(W) x 97.7mm(H) x 306.8mm(D)		434.6mm(W) x 97.7mm(H) x 450mm(D)
Weight	12 kg		

Pattern No. : I311648, I398655, ZL 2009 2 0148342.2

Pattern Name : Discharge and remote feedback integrated testing system

Note*1 : The test condition is under Chroma's probe tips

Note*2 : The accuracy of Chroma 58154 may vary in customer's setup conditions. To fix this problem, ESD tester needs to be tuned the value of the impedance to minimized waveform distortion, or customers provide their setup information in advance and Chroma tunes ESD testers before shipment to fit customer's test method.

Note*3 : The test condition is for Model 58154 and the operation is at fix pulse mode.