

MODEL 3380

KEY FEATURES

- 50/100 MHz clock rate
- 50/100 Mbps data rate
- 1024 I/O pins (max. 1280 I/O pins)
- Up to 1024 sites parallel testing
- 32/64/128 pattern memory
- 16M capture memory per pin
- Various VI source
- Flexible hardware architecture (interchangeable I/O, VI, ADDA,)
- Real parallel trim/match function
- Time and frequency measurement unit (TFMU)
- STDF tools support
- Test program/pattern converter (J750, D10, S50/100, E320, SC312, V7, TRI-6036, etc.)
- AD/DA test (option)
- SCAN test option (max. 2G M/chain)
- ALPG test option for embedded memory
- CRAFT C/C++ programming language
- Software interface same as 3380P/3360P
- User-friendly Windows 7 environment

VLSI TEST SYSTEM MODEL 3380

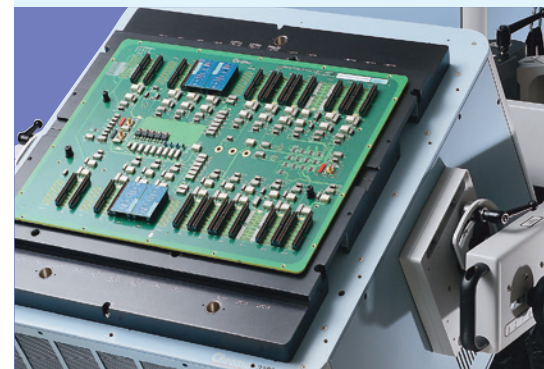
To cope with the IC testing trend of high-speed, numerous pins, and integration of complicated functions in nowadays semiconductor industry, Chroma's 3380 VLSI Test Systems, the 3380D/3380P/3380 models, have adopted powerful functions according to different pin counts and parallel test ability, providing a complete test solution to fulfill customer's demands in cost and performance.

The 3380 VLSI test system equipped with a maximum of 1280 I/O channels, 256 VI sources, flexible architecture and comprehensive optional function boards (ADDA/Hi-voltage DPS) can meet the high parallel multi-site test tendency. The embedded 1024 I/O pins is capable of testing 1024 ICs in parallel. In addition to supporting the unique 4-wire HD VI source ICs, the 3380 can also test Mini & Micro LED driver IC, CMOS image sensor(CIS), and 3D images through its adjustable structure, which covers a wide range of applications for IC testing.

The 3380 can bridge to 3380D(256 pins) /3380P(512 pins)for higher productivity requirements. No matter it is installation, stability, friendly user interface, or high cost/performance ratio, the 3380 Series VLSI test systems have been widely proven and adopted by Great China market.

APPLICATIONS

- MCU device
- ADC/DAC mixed-signal IC
- Logic IC
- ADDA
- ALPG
- Smart card
- CMOS image sensor (CIS)
- Power IC (Class D IC)
- Consumer IC
- LED driver IC



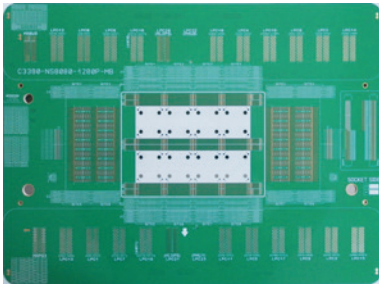
Chroma

SPECIFICATIONS

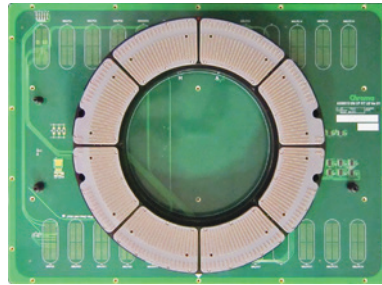
Model	3380
Clock Rate	50 / 100MHz
Data Rate	50 / 100Mbps
I/O Channels	1024 Pins (Max. 1280 Pins)
Pattern Memory	Standard : 32M ; Options : 64M / 128M
Parallel Testing Capability	1024 DUTs
EPA	± 500ps
Resource Per Pin Architecture	Yes
VI source	8CH : MXDPS : 16CH : MXUVI/MXREF ; 32CH : MLDPS ; 64CH : PWR64 (New PIB)
PMU (± 48V, ± 250mA)	32 channels
HV-Pins driver (+5.9V to +13.5V)	4 channels per board
PPMU (-2V~+ 6V, ± 32 mA)	Per pin (FIMV/FVMI)
Programmable Active Load (± 12 mA)	Per pin
TFMU (Time/Freq Measure unit:Max 400Mhz)	Per pin
Free-run Clock (Max: 200Mhz)	Per pin
Windows Environment	Window 7
Programming Language	C\C++
3380 Test Options	
AD/DA Converter Test (MXAWI / MXAWI2)	4 AWG / 4 DIG (16 / 24 bits)
Mixed-Signal Test (PXI)	24bits, 200MS/s
MXUVI (DPS ±12V, ± 1A, CG max. ±16A)	16 Channels / board
MXDPS (DPS -8V ~ +16V, ±2A)	8 Channels / board
MXREF (DPS ±48V, ±250mA, CG max. ±4A)	16 Channels / board
MLDPS (DPS +12V / ±500mA, ±6V/±1A, CG max. ±32A)	32 Channels / board
PWR64 (±6V / ±500mA, CG max. ±32A)	64 Channels / board
SCAN	2G bits / chain
ALPG Memory Test	16X, 16Y, 16D /board
System and Dimension	
Power Consumption	Max. 8KVA
Test Head	W714 x D717 x H458 mm (Max. 165Kg)
Main Frame	W766 x D700 x H1562 mm (Max. 160Kg)

* Note *1: "Direct-Mount" as Standard

CP & FT DIRECT MOUNT FROM ENGINEERING TO PRODUCTION



FT Direct-mount



CP Direct-mount
(compatibility with J750)

Get more product & global distributor information in Chroma ATE APP



iOS



Android

Search Keyword

3380

HEADQUARTERS
CHROMA ATE INC.
66 Huaya 1st Road,
Guishan, Taoyuan
33383, Taiwan
T +886-3-327-9999
F +886-3-327-8898
www.chromaate.com
info@chromaate.com

U.S.A.
CHROMA ATE, INC.
(U.S.A.)
7 Chrysler, Irvine,
CA 92618
T +1-949-421-0355
F +1-949-421-0353
www.chromaate.com
info@chromaate.com

EUROPE
CHROMA ATE
EUROPE B.V.
Morsestraat 32,
6716 AH Ede,
The Netherlands
T +31-318-648282
F +31-318-648288
www.chromaate.com
salesnl@chromaate.com

JAPAN
CHROMA JAPAN
CORP.
888 Nippa-cho,
Kouhoku-ku,
Yokohama-shi,
Kanagawa,
223-0057 Japan
T +81-45-542-1118
F +81-45-542-1080
www.chroma.co.jp
info@chroma.co.jp

KOREA
CHROMA ATE
KOREA BRANCH
3F Richtogether
Center, 14,
Pangyoeyeok-ro 192,
Bundang-gu,
Seongnam-si,
Gyeonggi-do
13524, Korea
T +82-31-781-1025
F +82-31-8017-6614
www.chromaate.co.kr
info@chromaate.com

CHINA
CHROMA ELECTRONICS
(SHANGHAI) CO., LTD.
3F Building 40, No. 333,
Qin Jiang Rd.,
Shanghai, China
T +86-21-6495-9900
F +86-21-6495-3964
www.chromaate.com.cn
info@chromaate.com

SOUTHEAST ASIA
QUANTEL PTE LTD.
(A Company of Chroma Group)
25 Kallang Avenue #05-02
Singapore 339416
T +65-6745-3200
F +65-6745-9764
www.quantel-global.com
sales@quantel-global.com

Hsinchu BRANCH
6F, No. 5, Technology
Rd., Science Park,
Hsinchu City
30078, Taiwan
T +886-3-563-5788
F +886-3-563-5758

SANTA CLARA
3350 Scott Blvd., #601
Santa Clara, CA 95054
T +1-408-969-9998
F +1-408-969-0375

CHROMA GERMANY GMBH
Südtiroler Str. 9, 86165,
Augsburg, Germany
T +49-821-790967-0
F +49-821-790967-600
www.chromaate.com
salesde@chromaate.com