



LCM TESTER MODEL 27011

To meet the high accuracy and low price requirements for LCM test device, Chroma 27011 that integrates the signal and power source provide a complete test solution for LCD Module. Its LVDS / TTL signal source fully complies with the digital signal standard, meanwhile with the 12V/5V/3.3V DC source output it is able to supply power to VDD/ Backlight for LCM test without obtaining external power source. Equipped with the interface of single key to switch the timing/pattern/program rapidly for test in auto or manual mode, the 27011 is able to provide a direct and convenient test environment for LCM by its complete hardware configuration and easy operation.

To fulfill the standard test signal requirements of various panels, this device supports LVDS signal with optional TTL signal available for use. It has 16 timings, 64 patterns, auto image rotation display system and multiple test functions settings. In addition an editor software is available for editing timing / pattern / program at PC site to create a product specific test program. The design of signal and power source integration for 27011 allows it to be utilized extensively in R&D/Quality Assurance/ Quality Inspection/After Sales Services/ Sales fields for LCM related tests.

The Programmable Logic Device is used in 27011 as the image generator to test the LCD Module. It supports VGA, SVGA, XGA, SXGA, UXGA and 1 Link / 2 Link digital signal output, also it has quartz oscillator built in to supply stable test signals as the standard signal source to the Device Under Test. This test device provides LVDS signal primarily, however, users can purchase the optional TTL signal conversion board for use to cope with the LCM features.

Besides the power source input of AC 90V~250V, it has the 12V / 5V / 3.3V DC power switch required by the LCM Vdd in the market and the 12V / 5V power for Backlight Inverter. Moreover, it has Signal/Vdd power on sequence to fit in the LCM Turn On test sequence.

As regards operation, 27011 can switch the Timing / Pattern and Program by the Mode key on the front panel directly to show the status on a 7-segment display. Users can select the required Timing and switch it to Pattern mode by pressing the Mode key, or switch it to program; and then conduct the test automatically or manually. It can execute tests easily and quickly with the convenient operation method and multiple function keys.

MODEL 27011

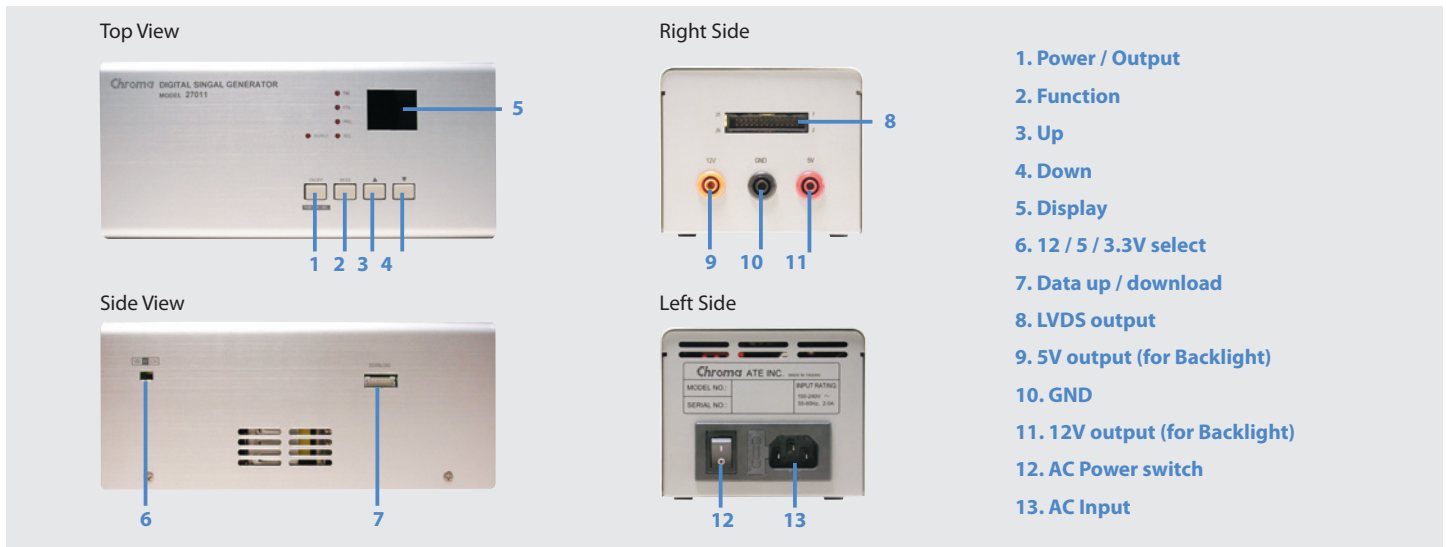
Key Features :

- LVDS / TTL (Opt) / TMD5 (Opt) output
- Pixel rate up to 162 MHz (LVDSX2 Link)
- Display size up to UXGA (1600X1200)
- 16 timings selecting and editing
- 64 patterns library (32 sets by editing)
- 16 programs (total 3553 sequence)
- 12V / 5V output for backlight
- 12V / 5V / 3.3V output for Vdd
- Power on sequence for signal / Vdd
- Timing / Pattern editing via PC
- Up / down load function
- Timing / Pattern Auto / Manual Run
- Low cost



Chroma

PANEL DESCRIPTIONS



SPECIFICATIONS

Model	27011		
Output	LVDS		
Option	TTL (A270111) / TMD5 (A270112)		
Pixel Range			
Pixel Rate	1 Link	2 Link	
25.175MHz	VGA (25.175MHz)	-	
40MHz	SVGA (40MHz)	-	
32.5MHz	XGA (65MHz)	XGA (65MHz)	
54MHz	-	SXGA (108MHz)	
81MHz	-	UXGA (162MHz)	
Signal Interface			
Signal	LVDS (6 or 8 bit)		
Connector	Box Header 26 Pin Right Angle		
Power Requirement			
Input (AC)	1Ø 110~240V ±10% V _{LH} 47~63Hz		
Output (DC)	5V/2.5A max. and 12V/4A max. (for Backlight) 12V/5V/3.3V (for Vdd)		
Power Sequence Resolution	Main Board PWR	Vdd	Signal
Turn-on	1ms	1ms	1ms
Turn-off	-	1ms	1ms
Operation			
Pattern Control	64 sets auto / manual (32 sets by editing)		
Timing Control	16 sets auto / manual		
Program Control	16 programs (Total 3553 sequence max.)		
Environment			
Operation Temperature	0 ~ 60°C		
Storage Temperature	-20 ~ +80°C		
Humidity	0 ~ 80 %		
Dimension (H x W x D)	84.4 x 103.5 x 232.2 mm / 3.32 x 4.07 x 9.14 inch		
Weight	1.4 kg / 3.08 lbs		

* All specifications are subject to change without notice.

SPECIFICATIONS

1		12		23	
2		13		24	
3		14		25	
4		15		26	
5		16		27	
6		17		28	
7		18		29	
8		19		30	
9		20		31	
10		21		32	
11		22		33 ~ 64	For Customer Design

HEADQUARTERS
CHROMA ATE INC.
 66 Huaya 1st Road,
 Guishan, Taoyuan
 33383, Taiwan
 T +886-3-327-9999
 F +886-3-327-8898
 www.chromaate.com
 info@chromaate.com

U.S.A.
CHROMA ATE INC. (U.S.A.)
 7 Chrysler, Irvine, CA 92618
 T +1-949-421-0355
 F +1-949-421-0353
 Toll Free +1-800-478-2026
 www.chromaus.com
 info@chromaus.com

EUROPE
CHROMA ATE EUROPE B.V.
 Morsestraat 32, 6716 AH Ede,
 The Netherlands
 T +31-318-648282
 F +31-318-648288
 www.chromaeu.com
 sales@chromaeu.com

JAPAN
CHROMA JAPAN CORP.
 888 Nippa-cho, Kouhoku-ku,
 Yokohama-shi, Kanagawa,
 223-0057 Japan
 T +81-45-542-1118
 F +81-45-542-1080
 www.chroma.co.jp
 info@chroma.co.jp

CHINA
CHROMA ELECTRONICS
(SHENZHEN) CO., LTD.
 8F, No.4, Nanyou Tian An
 Industrial Estate, Shenzhen,
 China PC: 518052
 T +86-755-2664-4598
 F +86-755-2641-9620
 www.chroma.com.cn
 info@chromaate.com

SOUTHEAST ASIA
QUANTEL PTE LTD.
 (A company of Chroma Group)
 46 Lorong 17 Geylang # 05-02
 Enterprise Industrial Building,
 Singapore 388568
 T +65-6745-3200
 F +65-6745-9764
 www.quantel-global.com
 sales@sg.quantel-global.com